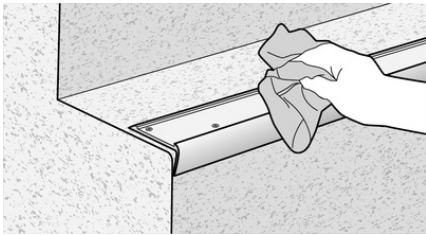


### Diamondtred Insert

---

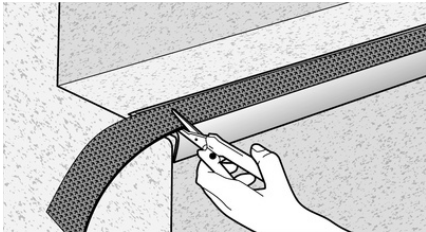
Diamondtred Insert is best installed when dry and between temperatures of 15-25 degrees celcius.

1



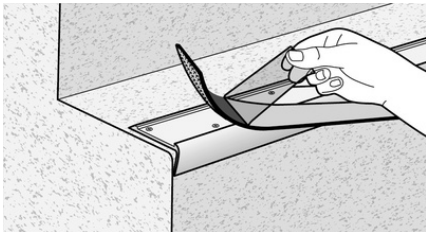
Ensure the aluminium channel is clean from dust, residues and debris. Wipe down with a cleaning solvent (Isopropyl Alcohol or similar).

2



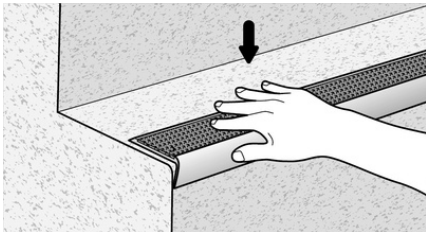
Precut the Insert to your required length.

3



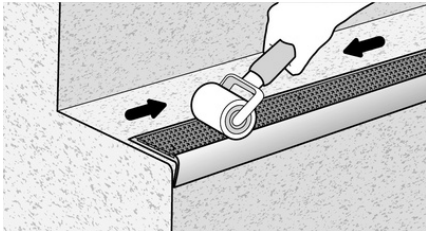
Remove the adhesive backing liner from the Tredsafe Insert.

4



Install by placing the Insert into the nosing and pressing into place without undue stretching.

5



Once in place, roll over the Insert to ensure consistent adhesion and a secure bond. Please take care not to stretch the Insert when rolling. Leave for a few hours to ensure proper bonding.

# Maintenance

---

**Aluminium Profiles**

Under normal conditions, the aluminium profiles are extremely durable, but the following should be taken into account

- Aluminium is attacked by alkali in some mortars and plasters in wet conditions
- Electrolytic corrosion is likely when in contact with some metals, particularly copper, copper alloys, iron, and steel. Although it is not affected by most timbers, corrosion is very likely when in contact with wet timber, such as western red cedar, douglas fir, and oak.

---

**Diamondtred Insert**

The Tredsafe Diamondtred Insert is produced with a polyurethane coating which reduces dirt retention. It is resistant to attack from ultraviolet light, oil, grease, petrol, salt dilute acids and alkalis, common household chemicals and detergents. Organic solvents will soften the insert.

The three dimensional pyramid pattern which provides excellent slip resistance in the wet will require more care than a smooth flooring surface. As with any flooring, regular maintenance is important to prevent excessive soiling.

Some Diamondtred insert colours will require more cleaning than others, but shouldn't need cleaning any more frequently than once every 24 months (dependent on foot traffic).

The following cleaning options are a suitable way of cleaning and maintaining the Diamondtred Insert

- Water blasting: this is the quickest and easiest option - suitable for outdoor installations. Water blasting will not affect the adhesive, or lift the insert.
- Manual scrubbing: Cleaning is also achieved by scrubbing with a bristle brush in conjunction with a cleaning solution. Commercial cleaning machines such as the "Scrub-Vac" are also suitable.