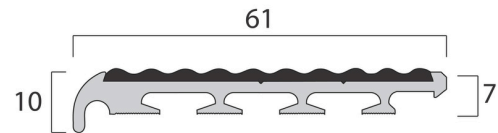
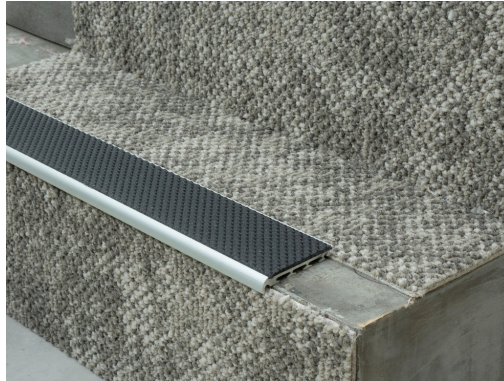


## AA124

## Carpeted Stair Nosing

Image/  
Drawing

**Description** Natural Satin Anodised Aluminium 10mm Front Square Single Carpet Stairnosing Profile. With a special blend of P.V.C. and sustainably sourced industrial sand, giving a homogeneous hard wearing anti-slip flooring for wet and dry conditions

**Purpose** This stair nosing product has been designed with a built in packer and lip on the back edge to simplify installation with direct stick carpets.

**Material**

- Anodised Aluminium
- Standard 3.66 Metre Lengths
- Supplied pre drilled for countersunk screw fixing (screws supplied)

**Insert**

1 x 53mm Tredsafe Diamondtred Insert



# Insert

---

**Special properties**

Tredsafe's Diamondtred insert is resistant to attack from ultraviolet light, oil, grease, petrol, salt, dilute acids on alkalis, common household chemicals and detergents. Organic solvents will soften the Diamondtred insert.

---

**Fields of application**

Suitable for interior or exterior use

---

**Slip Resistance****AS/NZS 4586 - 2013**

Wet Pendulum – mean 47 – class P4

Dry Floor – mean 0.75 – class D1

Wet/Barefoot ramp – Result 30° – class C

Oil – Wet Ramp – Result 21° – class R11

**AS/NZS 3661.1:1993**

Dry (tortus): 0.80

Wet (pendulum): 0.44

**BS 7976:2002**

Pendulum test - dry | PTV average 57

Pendulum test - wet | PTV average 47

**DIN 51130:2010**

Inclined platform test: R11

---

**Flammability and smoke density****AS1530.3.1982**

Flame Spread = 0   Smoke Dev = 7

**AS/ISO 9239.1 2010**

Mean Critical Radiant Flux 10.3kw/m<sup>2</sup>

Mean smoke development rate 85  
percentage minutes

# Insert

Description		Values
Residual indentation	2.5mm dial guage	Mean 0.05mm
Dimensional stability   80°C 6 hours		0.12%
Moisture movement   23°C 24 hours		0.02%
Elastic property   Tensile strength		2.48mj/m3
Heat Ageing   70°C for 15 days	Exudation Colour change	None None
Wear Resistance   Taber Abraser	1kg load H18 wheel @ 60rpm	1000 revs 0.6m weight loss

Information given in this data sheet is based on the current state of knowledge. This does not exempt the purchaser from carrying out his own careful inspections of incoming goods and their suitability for local building codes. We reserve the right to make changes to the product data in the course of technical progress or due to operationally related further development. Owing to factors beyond our control during application, recommendations given in this data sheet require tests and experiments by the customer. Our recommendations do not exempt the customer from the obligation to check any infringements of third-party rights himself and eliminate them if necessary. The suggestions for product use are not equivalent to a warranty of its suitability for the recommended purpose.

Each new release of this data sheet supersedes the previous one.

Release: June 2025