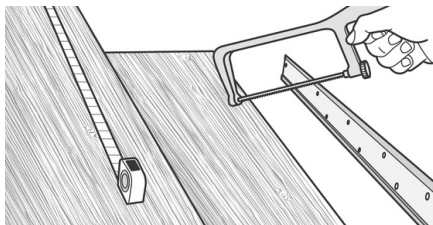


Covered Stair Nosing Profiles

Tools required

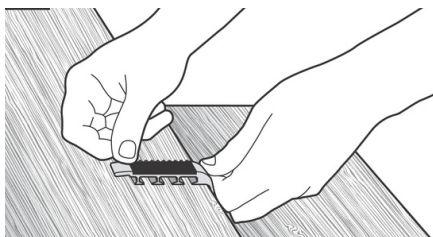
- Safety glasses
- Saw
- Gloves
- Knee pads
- Mechanical fixings - countersunk self-tapping screws (6g x 25mm)
- Battery operated cordless drill with hammer function (or electric drill if preferred)
- Squaredrive screwdriver bits
- Hammer
- Wipes or cloth rags
- Denatured or isopropyl alcohol
- For concrete substrates: Nylon concrete plugs (5g x 25mm), and concrete drill bit size 5mm wide with drill depth minimum 38mm for strength

1



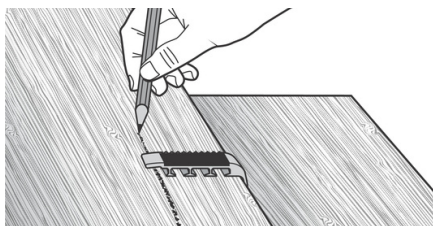
Measure and cut the profile to the required length. Lengths shorter than two pre-drilled screw holes require a hole to be manually drilled and countersunk onsite. Maximum spacing of screw fixings is every 20 cm.

2



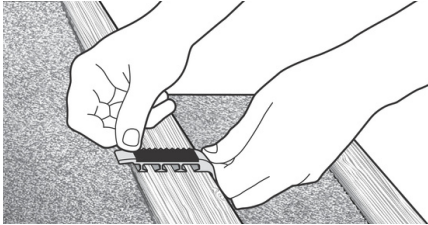
Use a sample profile to measure the distance between stair edge and carpet.

3



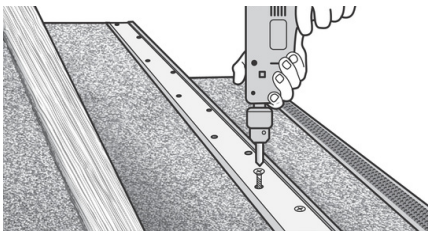
Mark where the floor covering should be cut back to.

4



Once floor covering is installed, check the distance is correct using sample profile.

5

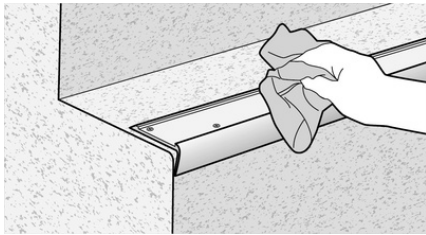


If installing on a concrete substrate, lay cut profile on the stair edge in place then mark the c/sunk holes with a marker then remove profile. Using a 5.5mm masonry drill bit on a drill with hammer function, gently drill the holes on the marks to a depth of 35mm max. Once complete, clean holes from concrete dust and tap the nylon plugs into holes ensuring they are recessed slightly. Reposition the profile and screw the profile down fastening it tightly.

Diamondtred Insert

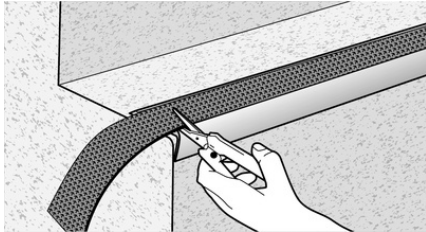
Diamondtred Insert is best installed when dry and between temperatures of 15-25 degrees celcius.

1



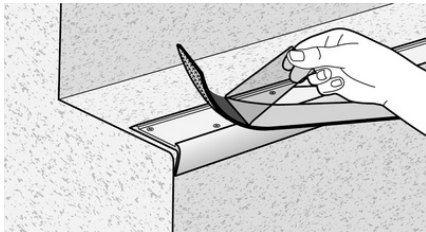
Ensure the aluminium channel is clean from dust, residues and debris. Wipe down with a cleaning solvent (Isopropyl Alcohol or similar).

2



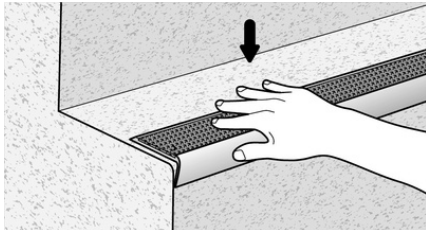
Precut the Insert to your required length.

3



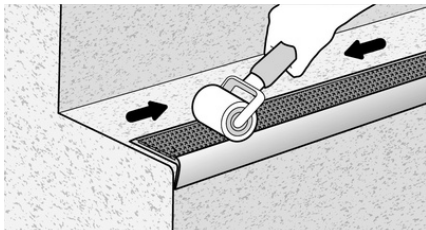
Remove the adhesive backing liner from the Tredsafe Insert.

4



Install by placing the Insert into the nosing and pressing into place without undue stretching.

5



Once in place, roll over the Insert to ensure consistent adhesion and a secure bond. Please take care not to stretch the Insert when rolling. Leave for a few hours to ensure proper bonding.

Maintenance

Aluminium Profiles

Under normal conditions, the aluminium profiles are extremely durable, but the following should be taken into account

- Aluminium is attacked by alkali in some mortars and plasters in wet conditions
- Electrolytic corrosion is likely when in contact with some metals, particularly copper, copper alloys, iron, and steel. Although it is not affected by most timbers, corrosion is very likely when in contact with wet timber, such as western red cedar, douglas fir, and oak.

Diamondtred Insert

The Tredsafe Diamondtred Insert is produced with a polyurethane coating which reduces dirt retention. It is resistant to attack from ultraviolet light, oil, grease, petrol, salt dilute acids and alkalis, common household chemicals and detergents. Organic solvents will soften the insert.

The three dimensional pyramid pattern which provides excellent slip resistance in the wet will require more care than a smooth flooring surface. As with any flooring, regular maintenance is important to prevent excessive soiling.

Some Diamondtred insert colours will require more cleaning than others, but shouldn't need cleaning any more frequently than once every 24 months (dependent on foot traffic).

The following cleaning options are a suitable way of cleaning and maintaining the Diamondtred Insert

- Water blasting: this is the quickest and easiest option - suitable for outdoor installations. Water blasting will not affect the adhesive, or lift the insert.
- Manual scrubbing: Cleaning is also achieved by scrubbing with a bristle brush in conjunction with a cleaning solution. Commercial cleaning machines such as the "Scrub-Vac" are also suitable.